

BONFIGLIOLI 7200 7.2T/M KNUCKLE BOOM CRANE



ELITE PONTOON
HIRE

ELITE
PONTOON
HIRE

General

Make	Bonfiglioli 7t / m
Type	Knuckle Boom Crane
Deck Coverage	Full 370 Degree Rotation

Main Dimensions

Length	2.4m
Breadth	2.1m
Depth Frame	300mm

Capacity

7t / m	See Load Chart
--------	----------------

Standard Equipment

3 Cylinder HATZ Diesel Driven Power Pack
6.0m Hydraulic Deck Hoses to Power Pack
Tested Lifting Shackles and Hook

Optional Equipment

Qualified Crane Operator
Specialist Rigging Equipment

Typical Uses

Light to Medium Lifting Duties
Installation of Timber Fenders and Quayside Furniture
Used to Lift Pontoon Spud Legs
Deck Area Service Crane

www.elitepontoonhire.com

For more information visit www.elitepontoonhire.com or call 01362 708393

BONFIGLIOLI 7T/M KNUCKLE BOOM CRANE

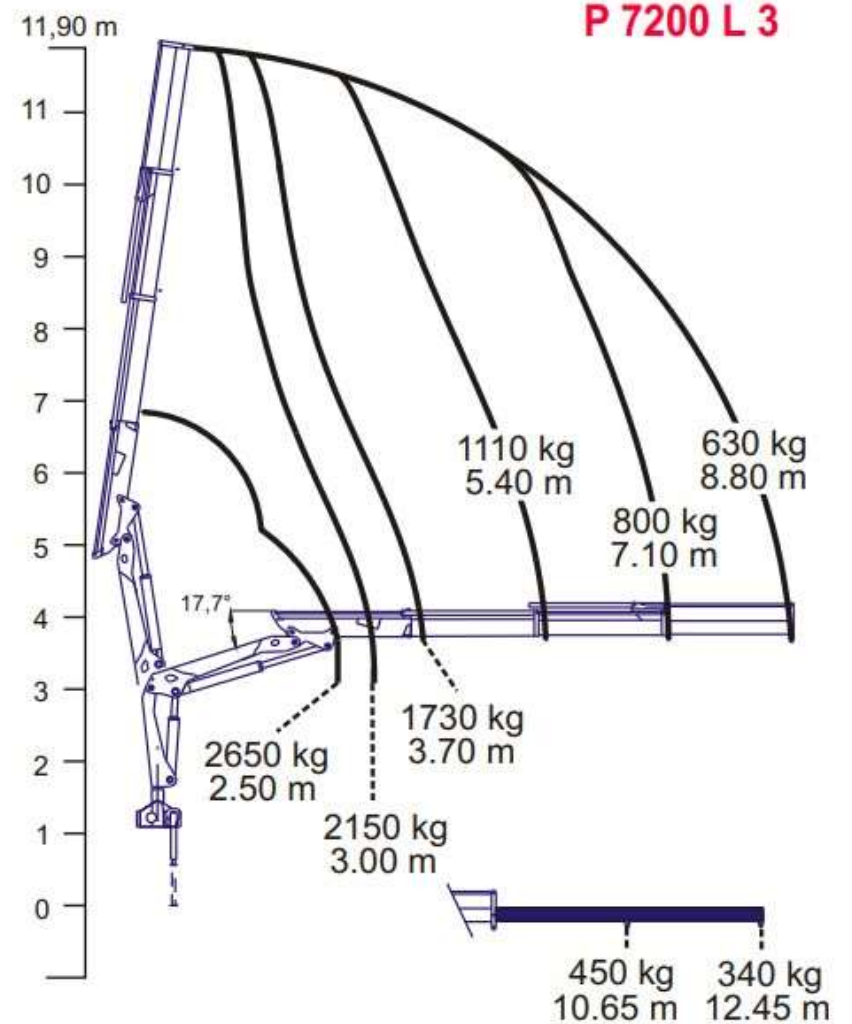
Typical Uses
Piling
Medium Duty Lifting and Installation Duties
Installation of Timber Fenders and Quayside
Furniture
Used to Lift Pontoon Spud Legs
Deck Area Service Crane



Benefits

- ☑ Extremely capable Light to medium-duty knuckle boom crane unit rated to 7T/M lift capacity and 630kg at 8.8m radius with a maximum lift height of 11.5m.
- ☑ Crane is a fixed base unit (does not fold) although the 7t crane has a low freeboard (height above water) for transiting under low river bridges.
- ☑ Able to be installed and ready for use within just a few hours.
- ☑ Bolts down to NATO deck fixings for ease of installation.
- ☑ Delivered to site with dedicated transit/mobilisation rigging.

Lifting Chart



www.elitepontoonhire.com

For more information visit www.elitepontoonhire.com or call 01362 708393